

**Harp & Bright Ltd.**

Company number: 12005085

Jack@harpandbright.co.uk

07812081716

64 Byron Street

Hove

BN3 5BB

Design & Access Statement

Project Name: Hove Park Tennis Alliance
Address: Hove Park Tennis Courts, Park View Rd,
Hove, BN3 7BF
Reference: 1040

Date of Issue: 21st September 2021

Revision: ...

Issued by: Harp & Bright
Address: 64 Byron Street, Hove, BN3 5BB

Employer: Hove Park Tennis Alliance
Address: Hove Park Tennis Courts, Park View Rd,
Hove, BN3 7BF

Introduction

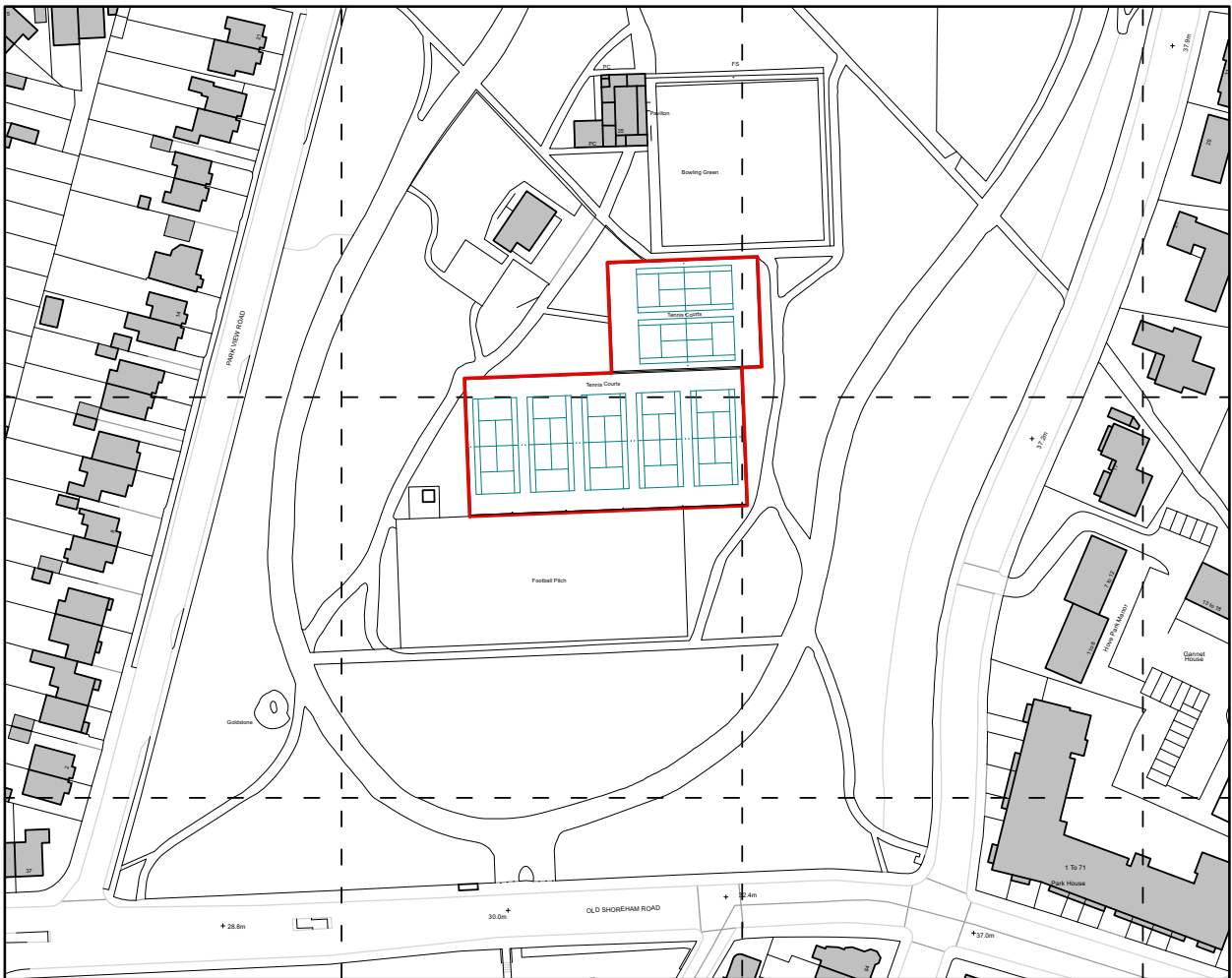
This Design & Access Statement has been prepared on behalf of the client, Hove Park Tennis Alliance, to support the application relating to Hove Park Tennis Courts.

The application seeks to add flood lighting to courts 1-5 increasing the amount of available court time to members and visitors.

This document should be read in conjunction with the following -

- 1040 - A.001
- 1040 - A.002
- 1040 - D.001
- 1040 - D.002
- 1040 - Design & Access Statement
- Lighting Design - 200181G

Location:



Block Plan - Not To Scale

Site:

The application site, Hove Park Tennis Alliance, consists of 7 tennis courts covering 3420sqm, the application seeks approval for flood lights to illuminate courts 1-5 covering 2390sqm. The tennis courts are located in the southern part of the park adjoining the 5 a side football pitches. The football pitches already benefit from floodlighting, half of their posts are within the tennis courts boundary.



Hove Park Tennis Courts looking north west.
5 a side pitches on the left.



Hove Park Tennis Courts looking south east.



Use:

The club has recently secured its 25 year lease from Brighton and Hove City council, and run as a Community Amateur Sports Club (CASC). This means Hove Park Tennis Alliance (HPTA) will retain its status as a volunteer run, self-funding, non-profit tennis club. Significantly, it will remain a public access parks facility for visitors throughout the year, not a private members club.

The courts themselves were re-painted four years ago and there are plans in place to carry out a resurfacing of courts 1-5 next year, we have also replaced over 50% of the chain link fencing with more to follow later this year. The club has four LTA-qualified coaches, who offer a range of tennis activities throughout, from tiny tots all through the age range including a club catering for the elderly. Tennis at Hove Park is truly a sport for all ages and abilities.

The club also holds regular community events. We have teamed up with the charity Safety Net and provide an introduction to tennis coaching for kids who are suffering from a range of issues. We also hold regular fundraising events and recently worked with both Dementia UK and local hospice The Martlets.

HPTA has over 300 adult members and approximately 50 junior members (more than any other parks league club in Brighton and Hove) Our average court usage this summer reached around 80% and had the biggest percentage increase in usage from any other site in the country according to our governing body the LTA.

Clearly, daylight hours currently dictate the limits of use and it is therefore proposed to install court lighting to courts 1,2,3,4 &5 to permit play during the evenings of the shorter days. This would significantly increase the amount of court time available for members, coaches and visitors. Recent advances in LED technology mean that modern court lighting systems are more efficient and more localised. These lights are very directional and the spillage levels are now remarkably low.

The lights will only be in operation when there is a confirmed booking for an individual court, so they will be switched on and off automatically.

It is known that successful tennis clubs use year-round lighting almost without exception, especially a parks site where just the effect of areas just being populated especially in the evening cuts down hugely on anti-social behaviour. This initiative will allow the club to take tennis to an even wider audience of people in the local area.

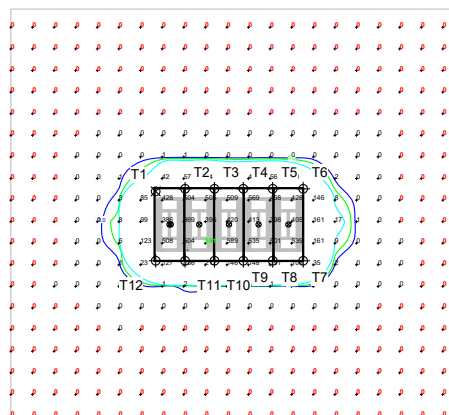
Design:

The floodlight proposal, carried out by local company and sports lighting specialists DMC Electrical, consists of 10no. 10m lighting columns and 20 LED fixtures. The position of the lighting columns can be viewed on the attached drawings.

The advanced LED floodlights are designed to provide optimal illumination at court level whilst eliminating light spill to the surrounding areas. Illumination summaries and light spill diagrams can all be seen on the specialist design documents accompanying this application.

Floodlighting will only be illuminated when a court is booked, minimising energy consumption and light disturbance. All lighting will be turned off by 10pm.

EQUIPMENT LIST FOR AREAS SHOWN									
Pole			Luminaires						
QTY	LOCATION	SIZE	GRADE ELEVATION	MOUNTING HEIGHT	LUMINAIRE TYPE	QTY / POLE	YES GRID	OTHER GRID	
4	T1, T6-T7 T12	10m	0m	10m	TLC-LED-S50	1	1	0	
4	T3-T4 T9-T10	10m	0m	10m	TLC-LED-S50	2	2	0	
4	T11 T2, T5, T8	10m	0m	10m	TLC-LED-S50	2	2	0	
12	TOTALS								20 20 0



SCALE 1: 2000
0 20m 40m

Pole location(s) + dimensions are relative to 0,0 reference point(s) ⊗

ENGINEERED DESIGN By: · File #200181G · 06-Oct-21

Hove Park Tennis - Phase 1 Hove, South East

GRID SUMMARY	
Name:	Blanket Spill
Spacing:	10.0m x 10.0m
Height:	1.0m above grade

ILLUMINATION SUMMARY	
MAINTAINED HORIZONTAL LUX	
Entire Grid	
Scan Average:	30.79
Maximum:	591
Minimum:	0
Min / Avg:	0.00
Min / Max:	0.00
UG (adjacent pts):	9436.08
CU:	0.98
No. of Points:	399
LUMINAIRE INFORMATION	
Applied Circuits:	A
No. of Luminaires:	20
Total Load:	10.8 kW

Guaranteed Performance: The ILLUMINATION described above is guaranteed per your Musco Warranty document and includes a 0.95 dirt depreciation factor.

Field Measurements: Individual field measurements may vary from computer-calculated predictions and should be taken in accordance with IESNA RP-6-15.

Electrical System Requirements: Refer to Amperage Draw Chart and/or the "Musco Control System Summary" for electrical sizing.

Installation Requirements: Results assume ± 3% nominal voltage at line side of the driver and structures located within 3 feet (1m) of design locations.



Not to be reproduced in whole or part without the written consent of Musco Sports Lighting, LLC. ©1981, 2021 Musco Sports Lighting, LLC.

ILLUMINATION SUMMARY



Provision of enhanced service:

The court lights will give the club the potential of over 5 hours additional use per day in the middle of winter. HPTA head coach Tom Honeywood says: 'The proposal will significantly increase the coaching hours I can offer to members and the general public, also allowing regular school coaching sessions to continue during the winter

HPTA's proposal is supported by our governing body the LTA, who write ' The additional facilities will help this community venue provide a more relevant and accessible facility for the local area and strengthen the ability of the club to provide tennis to the local community all year round

Alan Moon head of Friends of Hove Park Chairman also endorses the proposal and is a firm believer that the courts being used later in the evening will have a natural policing effect and cut down the recent problem of anti-social behaviour.

Ward Councilors Vanessa Brown and Samer Bagaeen are both supportive of our wish for floodlights and can only see positives for extended playing hours that will benefit the local community

Access:

Access to the tennis courts is unaltered.

The location, southern side of Hove Park, is within walking distance to an array of services and amenities. There are several bus routes connecting the location to the surrounding areas as well as Hove Train Station for additional transport connections.

Emergency services have unhindered access from Old Shoreham Road and Park View Road.

Conclusion:

The proposal will allow HPTA to offer vastly improved availability to the clubs members and the public. The clubs four LTA-qualified coaches will be able to extend their offering of activities, reaching more members of the community.